

FXCAMd 103 & 103M series technical sheet

WVGA, B&W cameras with white LED illuminator for ACCR container or UIC rail code recognition



Model number	103	103M
--------------	-----	------

CAMERA

Sensor Size (H x V pixels)	752 x 480
Sensor	B&W, Progressive scan CMOS
Optical Size	1/3"
Pixel Size (in μm)	6.0 x 6.0
Max Frame Rate (at full resolution)	60 frames/sec
Video output format	RAW, 8 bit grayscale
Exposure Control	Global shutter, software adjustable 1/100..1/30000 s
Communication interface	RJ45, 100 Mbit/sec
Internal memory	For 60 full frames
Light sensor	Included, Adjustable for switching day/night mode
Filter	-

LENS

Lens type	6-36 mm varifocal, Motorized
Iris, Focus, Zoom	Remote control focus, iris, zoom
Effective range for ACCR	3-20 m (3-7 m without ambient light)

ILLUMINATION

Type	Array of high quality LEDs, Controlled and synchronised flash
Wavelength	White light
Intensity	4 preconfigured modes (Low, Normal, High, Ultra)
Flash time	Software adjustable, up to 950 μs
Illumination range	Up to 7 m

MECHANICAL/ELECTRONICAL

Power requirement	24-28 VAC or 30-36 VDC
Power consumption	Avg. 10 W, Max. 15 W
Dimensions (L x W x H) w/o sunshield	168 mm x 125 mm x 145 mm
including sunshield	330 mm x 150 mm x 157 mm
Weight	Camera: 2.9 kg, Sunshield: 1.0 kg, Bracket: 0.6 kg
Conformity	CE, FCC, RoHS
IP rating	IP 67
Housing Color	RAL 9007 (Other colors are available upon request)
Temperature range	-20 °C to +55 °C (extra heating available)
I/O ports	Opto in * <input checked="" type="checkbox"/> \emptyset
	Opto out ** \emptyset <input checked="" type="checkbox"/>
	Serial RS232/S <input checked="" type="checkbox"/> <input checked="" type="checkbox"/>

* Opto isolated input for trigger-in, 5..12 VDC

** Opto isolated output (open drain 5-24VDC, 20mA max)

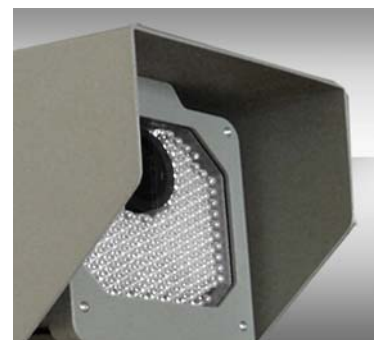
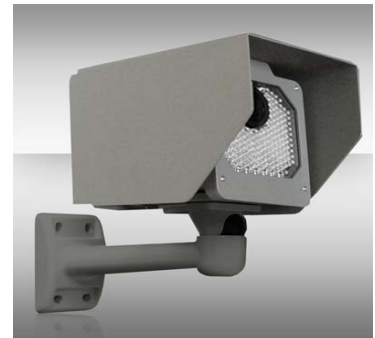
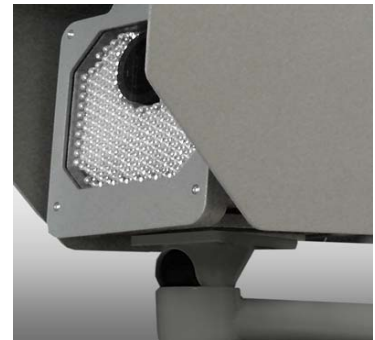
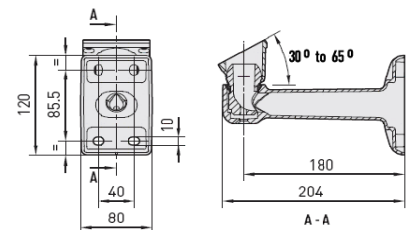
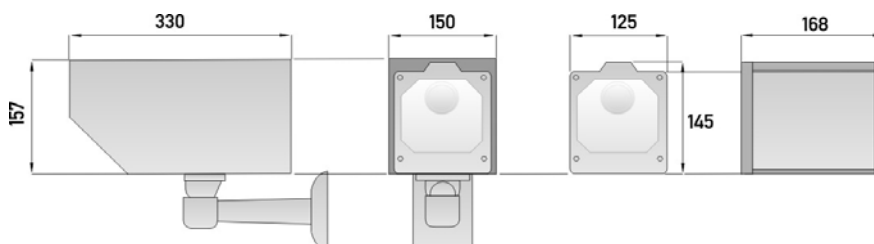
SOFTWARE

Supported platform	Linux and Windows
SDK	C, C++, C#, VB.NET, Java, OCX
Add-on features	Configurator, Management tool for multiple cameras Auto brightness control designed for license plate recognition, Automatic day-night mode switch, Autofocus, Color correction

BRACKET

Dimensions (L x W x H)	204 mm x 80 mm x 120 mm
Weight	0.6 kg

Technical specifications are subject to change without prior notice



ARH Inc.

H-1126 Budapest, Királyhágó tér 8-9. Hungary

Phone: +36 1 201 9650 • Fax: +36 1 201 9651

www.arhungary.hu • E-mail: moreinfo@arhungary.hu

